



Medicine River Wildlife Centre

ONSITE EDUCATION PROGRAM SYNOPSIS (COMPLETE)

Preschool - Grade 2 (3-7 years)

The onsite experience begins with an opportunity for a snack, bathroom break, and some much-needed movement in our Wildlife Homes Playground, lasting 20 minutes.

Let's get started! We will head out on our sensory trail walk, taking in the sights, sounds, smells, and even tangible parts of nature. We will stop at a variety of interesting locations and promote discussion and connection, lasting 20 minutes.

Once we reach the Learning Lodge we will head inside for the sit-down portion of the visit. The presentation introduces the concept of wildlife rehabilitation as it compares to human hospitals and veterinary clinics. We discuss the differences between wild and domestic animals with props and pictures. Next, we present a short story, along with pictures, about a little girl who finds an injured animal, its journey through the wildlife hospital, and its eventual release. Our presentation is about promotion of general respect for our environment and the creatures living in it. Finally, we bring out a live education animal (owl or skunk, see page 2). We teach about the specifics of that species and welcome questions from the audience. This lasts about 40 minutes.

Time to get up and move! We'll continue on our trail walk for the next 20 minutes, taking in the views from the tower overlooking the wetland. After a few stops along the way, we'll arrive back at the main building.

Who's hungry? Let's take 20 minutes for lunch in the picnic area.

Finish off your visit with a bit of time back on the playground before your departure.

The entire experience will last about 2 1/4 hours including snacks, lunch, and playtime. A common schedule for groups coming from the Red Deer area is as follows:

10:00am	Arrival
10:00-10:20	Snack, Bathroom, Playground
10:20-10:40	Outbound Trail Walk
10:40-11:20	Learning Lodge Presentation
11:20-11:40	Inbound Trail Walk
11:40-12:00	Lunch
12:00-12:15	Playground, Bathroom
12:15pm	Departure

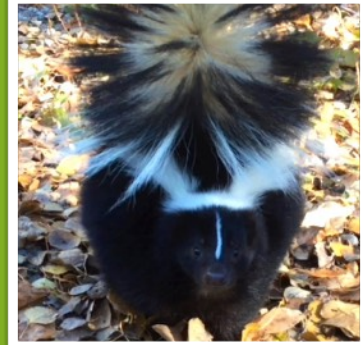
Education Animals: You may ask for a particular animal but please be aware that we may not be able to fulfill that request. If the animal is booked elsewhere, does not work with the handler, or simply needs a break, we will bring a different animal. We will reserve an animal when you book your program but it may be changed prior to the date.



Otis the Great Horned Owl has been a part of the education team since 2003. He has no physical injuries but is human-imprinted and cannot be released into the wild. He loves to hoot and flap for his audiences.



Olive the Great Horned Owl joined the education team in 2019 as a youngster. She is socialized and comfortable with people and cannot be released. Being a female, she is bigger than Otis and has a spicy personality.



Fang the Striped Skunk was admitted into our hospital in 2017. He was a runt and had infections in both eyes. After he regained his sight it was decided that he would help us to educate the public about his often misunderstood species.