



Medicine River Wildlife Centre

ONSITE EDUCATION PROGRAM SYNOPSIS (COMPLETE)

Grades 2-6 (7-12 years)

The onsite experience begins with an opportunity for a snack, bathroom break, and some much-needed movement in our Wildlife Homes Playground, lasting 30 minutes.

Let's get started! We will head out on our sensory trail walk, taking in the sights, sounds, smells, and even tangible parts of nature. We will stop at a variety of interesting locations and promote discussion and connection, lasting 30 minutes.

Once we reach the Learning Lodge we will head inside for the sit-down portion of the visit. The presentation will introduce the concept of wildlife rehabilitation, discussing an animal's journey through the wildlife hospital including treatment, caging, food, exercise, and eventual release. We talk about common wildlife injuries and how humans impact our environment, offering suggestions as to how each person can make a difference. Our presentation is about promotion of general respect for our environment and the creatures living in it. We may even touch on some social issues such as rumours and misinformation and how they compare with our attitudes toward wildlife. Finally, we bring out a live education animal (owl or skunk, see page 2). We teach about the specifics of that species and welcome questions from the audience. This lasts about 75 minutes.

Lunchtime! Let's take 20 minutes, either in the lodge, on the viewing tower, or amongst the trees for a bite to eat and a quiet visit with our friends.

Time to get up and move! We'll continue on our trail walk for the next 25 minutes, taking in the views from the tower overlooking the wetland and playing a hands-on sensory game. After a few stops along the way, we'll arrive back at the main building.

Finish off your visit with a bit of time back on the playground before your departure.

The entire experience will last about 3 1/2 hours including snacks, lunch, and playtime. A common schedule for groups coming from the Red Deer area is as follows:

10:00am	Arrival
10:00-10:30	Snack, Bathroom, Playground
10:30-11:00	Outbound Trail Walk
11:00-12:15	Learning Lodge Presentation
12:15-12:35	Lunch
12:35-1:00	Inbound Trail Walk
1:00-1:30	Playground, Bathroom
1:30pm	Departure

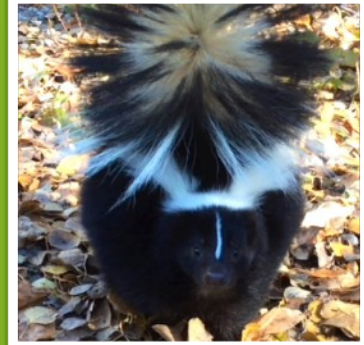
Education Animals: You may ask for a particular animal but please be aware that we may not be able to fulfill that request. If the animal is booked elsewhere, does not work with the handler, or simply needs a break, we will bring a different animal. We will reserve an animal when you book your program but it may be changed prior to the date.



Otis the Great Horned Owl has been a part of the education team since 2003. He has no physical injuries but is human-imprinted and cannot be released into the wild. He loves to hoot and flap for his audiences.



Olive the Great Horned Owl joined the education team in 2019 as a youngster. She is socialized and comfortable with people and cannot be released. Being a female, she is bigger than Otis and has a spicy personality.



Fang the Striped Skunk was admitted into our hospital in 2017. He was a runt and had infections in both eyes. After he regained his sight it was decided that he would help us to educate the public about his often misunderstood species.